

## NEWS LETTER

JULY 27, 2009

## INSIDE THIS ISSUE:

**V-SOFT AT NAB-  
TRAINING STILL  
OPEN****VERNIER GETS  
PLACQUED****V-SOFT'S NEW OFF-  
PREMISES DATA-  
BASE SERVER****LPTV WINDOW AND  
V-SOFT TV SOFT-  
WARE****PLOTTING AN AM  
CONTOUR WITH  
PROBE 4****PROBE 4'S MULTI-  
PLE OWNERSHIP  
MODULE****TRAINING APPLICA-  
TION FORM FOR NAB  
RADIO****SPECIAL POINTS  
OF INTEREST:**

- NAB Booth 316 and V-soft training
- Vernier Speaks
- New database server requires user changes
- Lost Keys and Grace Period
- AM Contours & Probe 4
- Probe 4's New Multiple Ownership Module

**V-SOFT PLANS FOR NAB RADIO**

V-Soft Communications will be in **Booth #316** at the NAB Radio Conference in Philadelphia. (Sept 23 through Sept 24.) Prior to the conference, on Sept 22 and 23rd, V-Soft will offer a two day broadcast engineering training session using V-Soft software. This is a great opportunity to see all the new features now available in our software. Enrollment in the training program is still open; to sign up contact Kate at [Kmicbler@v-soft.com](mailto:Kmicbler@v-soft.com) or use the handy form attached to this newsletter. All participants will receive an exhibits pass as well as breakfast and lunch during the training.

The NAB has a three day engineering tract in the works, so there will be plenty for the broadcast engineer to take in. Click the URL below to see the engineering tract schedule. (<http://tinyurl.com/msxe23>.) We hope to see you at NAB Radio.



John Gray (right) discusses Probe 4 at NAB Conference

**DOUG VERNIER ACCEPTS THANKS**

V-Soft president Doug Vernier is shown here accepting a plaque from Gary Dorhout at the Waterloo Technical Society meeting held in Cedar Falls. Vernier, the speaker for the evening, presented a talk about broadcast allocations in the AM, FM and TV bands. The society is composed of engineers and technicians from throughout eastern Iowa.



## V-SOFT UPGRADES DATABASE SERVER

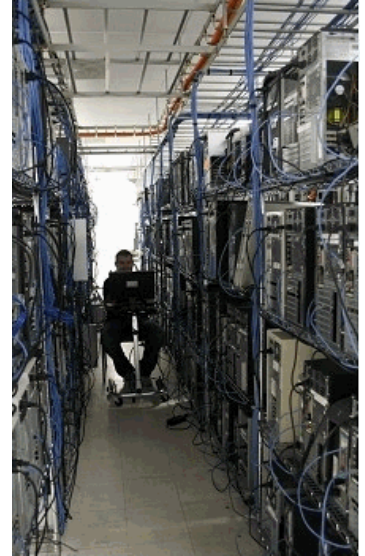
Hidden behind the scenes at V-Soft is the new off-premises Linux database server. This V-Soft dedicated server is housed on a main Internet trunk line in a 14,000 square foot facility in Kansas City. The server provides a guarantee of 99.9% up-time with multiple providers, BGP4 Bandwidth (KCIX, Cogent, Level 3), 400 kW Diesel power backup and a full UPS system, utility power from multiple redundant grids, and 120 tons of N +1 redundant cooling.

The V-Soft web sites have already been updated to connect to the new server which will be used in tandem with the old server for approximately ten days, at which time the old database server will be phased out.

Users using the automatic executable and database update features of the V-Soft programs will need to update their programs with the latest versions, now found on both the new and the old servers.

FMCommander (<http://tinyurl.com/mbvcj6>) users will be required to reset the automatic updating feature of the program by selecting the “Task” button found under “Settings—Defaults” on the program’s main screen window and responding to the auto-update wizard.

Our new server is yet another example of providing our users with a reliable and powerful updating system.



Server Racks at K.C. Facility

## PREVENTING LOST KEYS AND GRACE PERIODS

In the past we have reported on V-Soft Communication’s program to prevent our software licensees from the burden of paying the second seat licensee fee for a lost or stolen key.

To avoid the high cost of replacing your software, we recommend that any user who takes his/her key on the road adopt V-Soft’s internet security program.

In essence, each hardware key issued under this program will have a complementary internet number assigned. When the software is executed, the program checks for a user’s local key and if it is found the software then checks the internet for the comparable number. If the key is lost or stolen we can simply de-activate the internet key number and the key becomes useless. The user can then call V-Soft for a replacement for simply the cost of the key itself.

### NEW GRACE PERIOD

For those users taking their laptops into the field where internet is not available, V-Soft can now issue a Grace Period, which will tell the new security server to continue to authorize the program to run without internet checking for the period of the grace period. If the grace period is three days, the user will have to connect to the internet during or after the next three days to continue to run the program.

The new internet server used for key authentication is backed up by a second server to assure a user there will be no software downtime due to a loss of internet connectivity.

To protect your programs from loss please call us and we will issue a key exchange procedure to provide with you a local key having the capability to operate under the internet security program.

**“Our new server is yet another example of providing our users with a reliable and powerful updating system.”**



## NEW LPTV APPLICATION OPENING — FREEZE TO BE OFF

### FCC LPTV/Translator Opening Using V-Soft programs to identify LPTV and Translator channels.

The Federal Communications Commission has announced an LPTV/Translator filing opening for new *digital only* applications in rural areas beginning **August 25th, 2009**. Major changes to existing analog and digital LPTV and translator services will also be accepted. Applications must adhere to the rural geographic requirements which require the proposed LPTV/Translator site to be at least 121 kilometers from the appendix A list of major U.S. cities. Applications filed during the opening will be based on first-come-first serve processing.

The Commission also announced that it will accept applications on a *nationwide basis* for new *digital only* LPTV/TV translators and major changes to existing analog or digital LPTV/Translator stations beginning **January 25th, 2009**.

Download the Notice (<http://tinyurl.com/nher7d>) by plugging the URL into your browser.

We recommend **SearchTV** (<http://tinyurl.com/nptavf>) to identify which channels are likely candidates for further study. The user can insert the reference station's parameters and compile a job file for a particular location. **SearchTV** will analyze each channel on a contour to contour basis. Then the user can examine the availability of any TV channel simply by using the mouse to click from one channel display to the next all across the TV band. Many channels with contour overlaps may be usable after all, since the Commission now applies Longley-Rice and the provisions described in the OET 69 bulletin. There are numerous occasions when channels with relative small contour overlap will meet the OET 69 guidelines.

If a possible channel is found then **Probe 4's** DTV Module (<http://tinyurl.com/nuntn5>)

comes into play. The user should run an outgoing DTV study using the post transition LPTV parameters, which include the use of the year 2000 census, 1 km cell-size and 1 km terrain profile intervals. LPTV and TV translators can cause up to 2% interference to other LPTV/ TV translator stations and up to 0.5 percent interference to full-service DTV stations. The percentage is based on the population within the station's noise limited or grade B contour that is affected by the proposal. **Probe 4** will calculate any masking and then provide a total population and percentage of interference to the protected service of each station. If the user sees that the interference to any one station is exceeded, the use of a directional antenna, a power reduction or a more stringent mask can be applied.

Once the user establishes a power and an antenna pattern orientation that keeps the interference to other stations

below the maximum allowed, the user should then run V-Soft's on-line **SUNDTV** analysis program. This program is not nearly as flexible as Probe 4 for making parameter changes and doing "what-ifs" that may help reduce interference, but it is exactly the same program used by the FCC to check LPTV/Translator applications and therefore the user can determine precisely what the FCC engineers will see when reviewing the application.

For more information and to sign up to use the V-Soft on-line **SUNDTV** program, use this link: <http://tinyurl.com/l86v5u>. Once signed up you will given a windows front end executable and a username and password. The program will notify the user that a study is ready by sending an email message. A web page link will be provided to a web folder where all downloadable studies will be found. As a get acquainted offer, the first study using the **SUNDTV** program is free. Call V-Soft for additional information (800 743-3664.)

## SHOWING A 2 MV/M AM CONTOUR ON A PROBE MAP WITH AN FM TRANSLATOR'S 1 MV/M CONTOUR

The Commission says it now permits FM translators, authorized before March 2009, to retransmit AM stations. (<http://tinyurl.com/naf2b8>)

This new rule can only be used by commercial AM stations owning FM translators or NCE stations under a Rebroadcast Consent Agreement. To receive approval for an FM translator of an AM station, the AM licensee

must show the Commission that the translator's 1 mV/m falls inside the 2 mV/m groundwave contour of the AM station or within a 25 mile circle, whichever is the lesser.

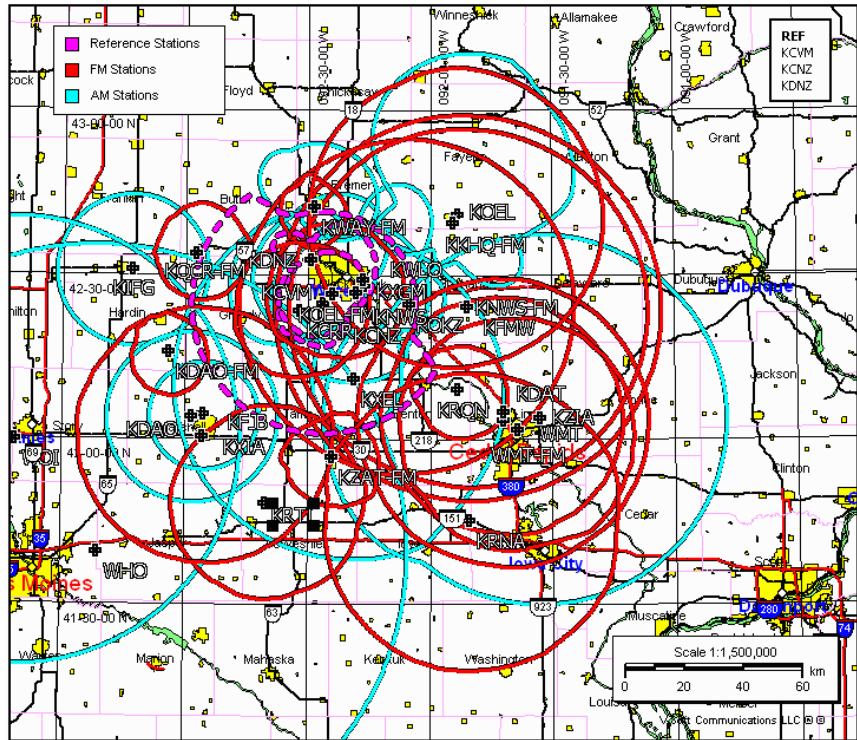
**Probe 4** comes with a Multiple-Ownership module which allows the program to load pre-calculated contours, such as the AM 2 mV/m. So, now the user can make a map of a 2 mV/m

AM contour without importing from **AM-Pro** (<http://tinyurl.com/mvnzep>.) If you are using Probe 3, you can import an AM contour from a Distance-to-Contour table saved by AM-Pro. Once the AM contour is plotted, it is an easy matter to plot the 1 mV/m contour of the FM translator showing that the contour falls within the AM's 2 mV/m. The 25 mile circle can be plotted

by creating a dummy station at the AM coordinates and then by right-clicking the transmitter call sign and selecting "Add" and then using the drop-down box to select "Circle Contour". The dummy call sign then can be removed by a left-click to the call sign and then by deleting the call sign from the pop-up transmitter properties box.

## MULTIPLE OWNERSHIP STUDIES NEW IN PROBE 4

While the Commission reviews multiple ownership in big cities using BIA's "Heard in Market" audience statistics, all of the smaller markets continue to use the Commission's ownership rules. These rules call for the engineer to place the 3.16 mV/m contours of all FM stations and the 5 mV/m of all AM stations owned by a given licensee on a map. These are called the reference contours. Then the process requires that the engineer map the AM and FM contours of all stations that touch the reference contours. The total of all overlapping stations, including the reference stations, then becomes the market count. Ownership of additional stations or upgrades of existing licensee stations are also reviewed using these ownership rules. **Probe 4** is packaged with a new duopoly module that performs these requirements in seconds, which amounts to significant time savings for the user. The V-Soft Duopoly Database contains pre-made contours for all FM, AM stations and TV stations throughout the U.S. When a multiple ownership study is requested, **Probe 4** uses this pre-made database of contours to nearly instantly plot the reference stations contours and those stations with contours crossing over. A complete report can then be printed. A list of ownership limitations is contained in FCC Rules Section 73.3555 (<http://tinyurl.com/lg8f45>) under "Multiple Ownership."

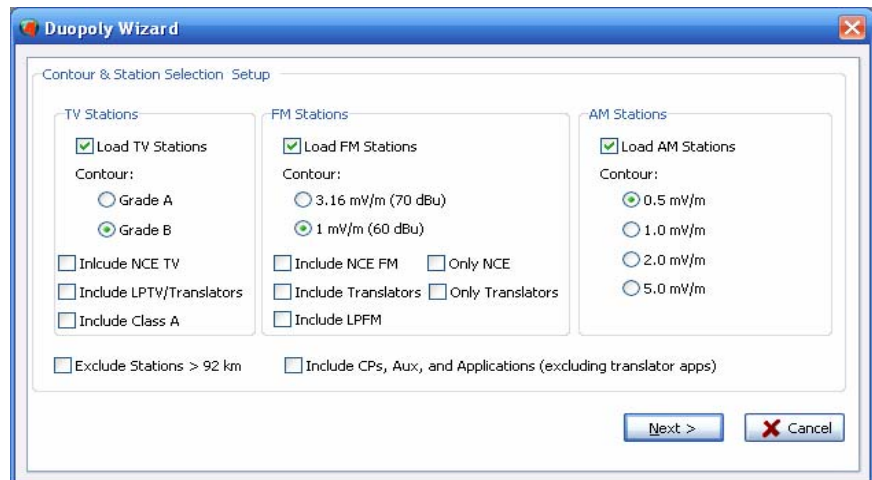


greater than 92 km exclusion rule, then click "Next." The 2nd wizard screen asks for the reference stations the user wish to have. These can be stations from the duopoly database or new "User" stations can be added. Once this has been accomplished, clicking "Next" will produce a 3rd screen giving the user the option to remove or edit any of the stations identified. Clicking "Next" again will cause the program to do its calculations and provide you with a map of the reference station contours (dashed lines colored purple) and all AM (light-blue) and FM

stations (red) with contours crossing the reference stations' contours. To produce a printout, click "Report" on the main menu and then click "Duopoly Style Report." The report first shows the total number of stations identified in the study followed by a list of the reference stations and finally a list of all the stations with crossing contours. Complicated Multi-Ownership studies couldn't be any easier when using **Probe 4**.

## HOW TO DO MULTI OWNERSHIP STUDIES

**Probe 4** will plot AM, FM and TV contours from the Duopoly Database one at a time or all at once using the Multi-Ownership feature. To use this feature, start a new study, and select "Duopoly Study." Then from the Duopoly Wizard select the values of the pre-made AM, FM or TV contours that you wish to plot. Select whether you wish to include NCE stations and translators or use the





**Registration Form  
7th Annual V-Soft Communications'  
Broadcast Allocations Software Training  
September 22-23, 2009  
Philadelphia, PA**

Please fill out the following form and sent it, along with  
a check or purchase order for \$550/person to:

V-Soft Communications  
Attn: Kate Michler  
401 Main Street, Suite 213  
Cedar Falls, IA 50613

Company Name: \_\_\_\_\_ No. of Attendees: \_\_\_\_\_

Name(s) of Attendee(s) \_\_\_\_\_

\_\_\_\_\_

Contact: \_\_\_\_\_

Phone: \_\_\_\_\_

Email: \_\_\_\_\_

For office use only
Dt. Rcd. _____
Dt. Paid _____
Packet _____
TT _____
NT _____

Specific issues/questions you would like to see ad-  
dressed: \_\_\_\_\_

\_\_\_\_\_

\_\_\_\_\_

Primary Interest: (Circle all that apply) DTV FM AM Microwave

The cost of training is non-refundable and valid for the September 2009 Phila-  
delphia session only.

Includes breakfast and lunch each day and a guest pass for the 2009 NAB Ra-  
dio Show exhibit floor.