

NEWS LETTER

JULY 20, 2010

INSIDE THIS ISSUE:

V-SOFT TRAINS INDUSTRY CANADA SPECTRUM MANAGEMENT ENGINEERS

OUR TRAINING SEMINAR AND THE NAB RADIO CONFERENCE

GLOBE TERRAIN IS NOW AVAILABLE

THE DIPOLE FACTOR SHOULD ALWAYS BE USED IN LPTV STUDIES

NEW PROBE 4 DATABASE SEARCHING CULL TOOL

WINDOWS AND VISTA COMPATIBILITY

ON-LINE DTV PROGRAM TO STUDY SINGLE FREQUENCY DTS NETWORKS



CANADA'S PARLIMENT IN OTTAWA

SPECIAL POINTS OF INTEREST:

- NAB Booth # 57
- Training in Washington, D.C.
- NAB Radio Conference
- Probe 4 Database Searching
- Globe Terrain
- Dipole Factor
- FCC Tidbits

V-SOFT TRAINS INDUSTRY CANADA'S SPECTRUM ENGINEERS

(Ottawa, Canada) On July 9th, V-soft Communications wrapped up three days of intense spectrum management training at Canadian government offices in the Nation's Ottawa capital. The training workshops were attended by 25 engineers assigned to the Spectrum Management Division of Industry Canada. The workshop included domestic and cross-border spectrum issues for AM, FM and DTV. Industry Canada has been using V-Soft Communications software since 2004

when V-Soft's Probe, AM-Pro and FMCommander software were adopted by the agency.

V-Soft's President Doug Vernier, stated, "Industry Canada has acquired a number of new engineers who have told us they benefited immensely from the training. I am extremely pleased to continue our long standing professional relationship with Industry Canada."



JOIN US FOR TRAINING AND THE SHOW AT THE NAB RADIO CONFERENCE IN WASHINGTON, D.C.

V-Soft's Doug Vernier and John Gray will be in the booth at the NAB Radio conference to greet you in September. Our booth #57, will be found in the Marketplace (next to the networking lounge). Keep an eye out for our special show discounts on all our software products.

The NAB Radio show will feature an engineering tract that includes a meeting of the NRSC, a session with FCC staffers Peter Doyle and James Bradshaw, AM/FM digital transmitters, AM modeling and more.

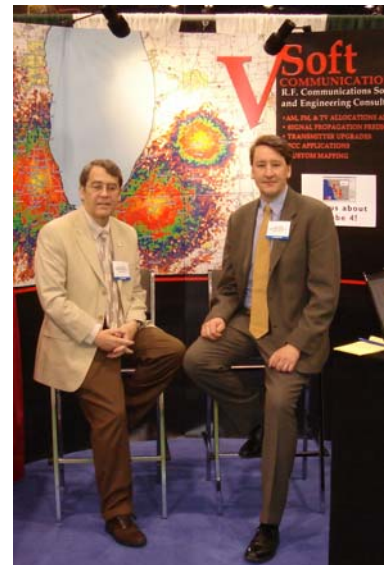
Immediately before the Radio conference, we will have our traditional training seminar September 28th and 29th at the Morrison Clark Inn, just a few blocks from the conference. For your convenience V-Soft has reserved a block of rooms at a discounted price. Call the Morrison Clark Inn today to reserve a room, (800-332-7898.)

To enroll in the training seminar or for more information see <http://tinyurl.com/25f3nuk>.

**V-Soft Training
Sept. 28th-29th**

**Call us now to
reserve a place
800 743-3684**

**NAB Radio
Conference
September 29-
Oct. 1st, 2010.**



ANNOUNCING GLOBE TERRAIN AVAILABILITY

V-Soft Communications has now added the Globe Terrain database to its inventory of available terrain elevation databases.

The GLOBE 30 second data set was developed by National Geophysical Data Center, NESDIS, NOAA, and the U.S. Department of Commerce. The objective was to create the best available 30-arc-second global digital elevation data set based on data from existing

data sets. The GLOBE terrain database contains data from 11 sources, and 17 combinations of source and lineage. It was developed during the 1990's and was released in 1999. This is the same database that is found on the FCC web site for calculating domestic U.S. HAAT. It can be used as an alternative database showing rather than the early NGDC or FCC databases.

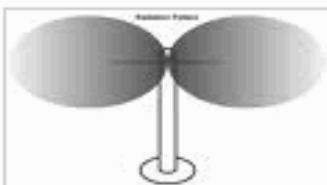
The V-Soft 30 Second "World"

database differs from the GLOBE and is based on the GTOPO30 data set completed in 1996 and developed over a three year period through a collaborative effort led by staff at the U.S. Geological Survey's Center for Earth Resources Observation and Science (EROS). The "World" set is not in prominent use at the FCC. All V-Soft programs are currently being modified to accept the new GLOBE terrain.

**GLOBE
TERRAIN
DATABASE**



DIPOLE FACTOR BEING USED FOR LPTV (OET-69)



Definition: Dipole Factor

The UHF channel contour is modified by subtracting a dipole factor equal to 20 log [615/(channel mid-frequency in MHz.)]

The Dipole Factor is being used by the FCC for UHF LPTV. We have recently confirmed that when analyzing LPTV stations using Longley/Rice and OET 69 methodology, the FCC's processing program applies the dipole factor when determining the protected contour of UHF LPTV stations. Even though the

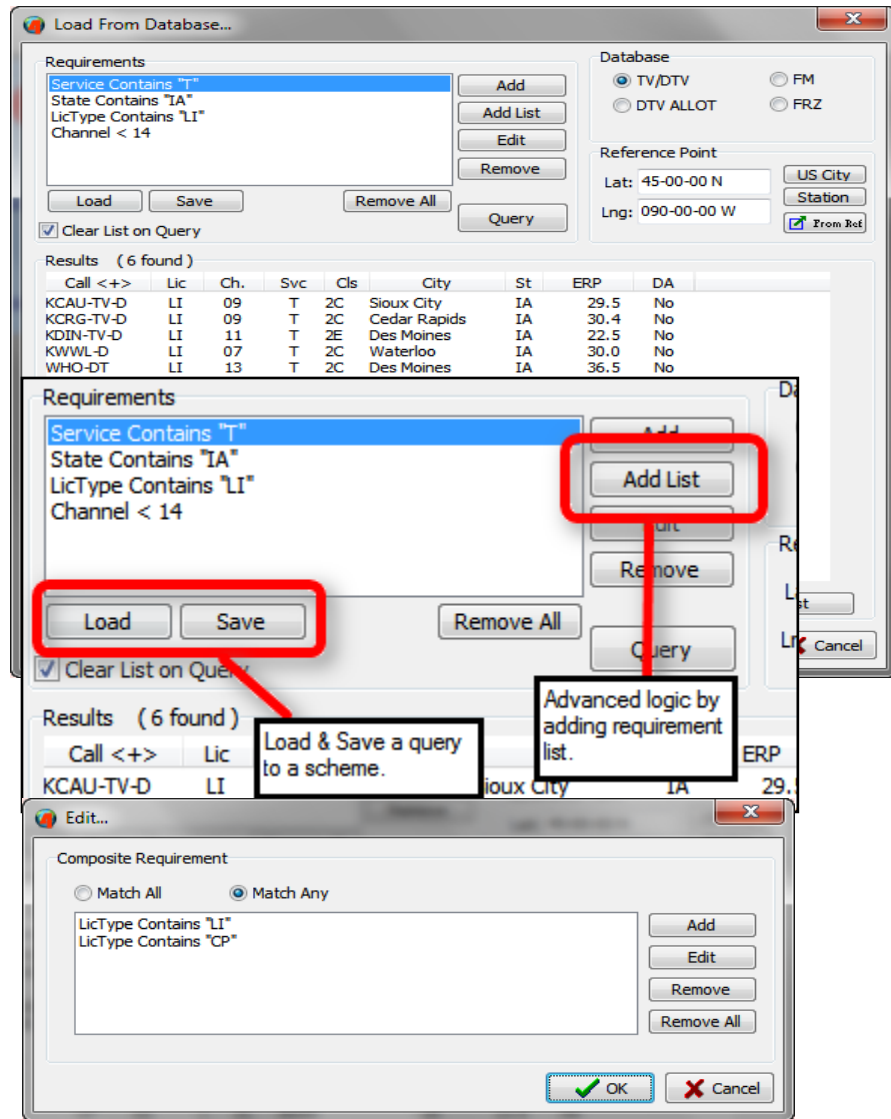
contour based protection rules indicate the non-adjusted service contour is to be used, the dipole adjustment is considered to be part of the OET 69 methodology and is therefore applied when defining the protected area and threshold for reception. This can make a significant difference in some studies because many interference

areas exist at the edge of the protected area. Probe 4 has the option of using the dipole correction by default. To cause Probe to always apply the dipole factor when setting up studies or adding contours, check the box labeled "Always include dipole factor for UHF LPTV protected contours" on the "Misc Options #2" tab of the "Study Defaults" window.

NEW DATABASE SEARCHING CAPABILITY OF PROBE 4

Several new functions were recently added to the "Database Cull" window in Probe 4. There are now "Load" and "Save" buttons in the "Requirements" section of the window that will allow queries to be saved and recalled at a later time without having to enter them again.

Also new is the "Add List" button that allows more complex logic in queries. For example, in the past, if as part of your query you wanted to find all records where the license type was "LI" or "CP" and ignore other license types, you had to do two queries, one with "LI" and another for "CP". Now, using "Add List" you can specify that "License Type Contains LI" and "License Type Contains CP" and select the "Match Any" option to retrieve all records that meet either of those requirements in one query. This powerful tool allows for much more refinement in doing complex searches of the FCC's database.

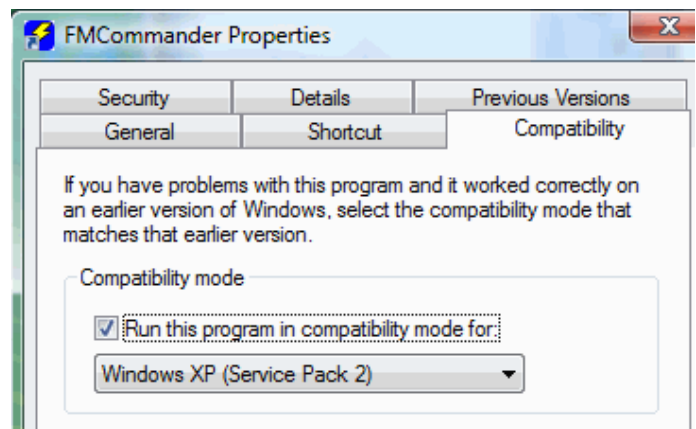


WINDOWS 7 AND VISTA COMPATABILITY

All V-Soft Communications programs will operate properly in the Vista and Windows 7 environment. However, to insure complete graphics functionality, FMCommander and SearchTV should be placed in the XP-SP2 or SP3 compatibility mode. Setting compatibility is easy to do; first right-click the program's ICON and then click "Properties". When the "properties" window is displayed you should

then click the "Compatibility" tab. Next, click the check box that says "Run this program in the compatibility mode for". Then, from the dropdown, box select "Windows XP, (Service Pack 2) for Vista or Windows XP (Service Pack 3) for Windows 7.

Note: Microsoft no longer supports XP SP2, however they have extended support for the free XP SP3.



NEW ON-LINE DTV PROGRAM TO BE READY SOON

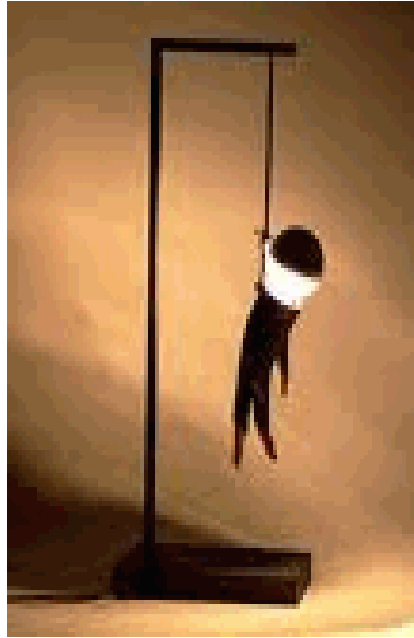
V-Soft Communications is currently working to update its SunDTV system to use the latest version of the FCC's processing software. In this new version, the LPTV and full service processing programs have been combined into a single program. This version also has the ability to analyze interference caused by and to DTS (Distributed Transmission Systems) facilities.) For more information on this Internet/server based digital TV analysis program visit :

<http://tinyurl.com/l86v5u>

FCC CONTINUES TO DEVELOP ITS PLANS TO REVAMP THE CDBS DATABASE.

Apparently, the FCC needs to change its database at least every decade to stay in style. After holding several meetings and seminars on consolidating and improving all the data lying in square cubbyholes and in dark Commission closets, the FCC is well along on its plans to make its sweeping changes. The last change was in 2000 when Y2K came and silently disappeared without a word. Now the Commission plans to include all the data from all of the various services it regulates into one common database. After the new format was adopted in 2000 everyone noticed that there were omissions and bad data throughout the new format. It was almost as if someone re-typed in everything. Finally, after ten years, everything is running smoothly and the data appears mostly correct. Hopefully, any new database format will keep it that way and the computer skills available to the Commission have improved since 2000.

Adapting our numerous database processing programs to a new database format will take hours of reprogramming, debugging and verification. Since we



process more than a dozen databases each day and all week long, it will take us time to get everything done. This is why we have asked the Commission to run the old database tandem with the new one for a period of six months. In year 2000 there was no overlap between database formats, which made it all the more difficult. We have been told that there will be no overlap because... you cannot have CDBS users typing in their applications twice. Although, we can see the problem, there are ways around this issue. If the Commission is unable to keep the old CDBS going, then they should write a program that will convert the new format into the old CDBS format and allow we users time to compare the output of our programs. The jury on what the Commission will do is still out, but we hope that there will be full cooperation with the current users to make the change as seamless as possible. V-Soft Communications pledges that we will give full priority to converting the new format to run with V-Soft programs. We will do everything within our power to make the change uneventful to our users.

FCC CALLS OFF THE WIDELY ANTICIPATED LPTV NATIONWIDE APPLICATION WINDOW

First the FCC extended the January 2010 Nation-wide LPTV window to late July and then it decided to postpone the window "indefinitely" leaving many applicants, who were about to apply, dangling in the wind.

The Commission's Broadband plan calls for "repacking the TV band." It is said that they want all TV to operate on channel 31 or below. Clearly, if repacking does occur, (and it looks likely) sadly assigning new LPTV digital stations to larger cities would contravene the goals of the Broadband Initiative.

FMCOMMANDER NOW FLAGS ALL STATIONS WITH MISSING ANTENNA PATTERNS.

Back in the late eighties, the FCC noticed it didn't have the directional antenna patterns of many FM translators, so they sent out a form to all identified licensees asking them to fill in their pattern information. If the Commission did not receive a response, for protection purposes it said it would consider the station to be operating with ten watts or less. Now, we notice that many of the same translators are flagged as directional but, there are no patterns for the stations. So, evidently the Commission never acted on their threat to reduce protection to these translator stations.

Recently, we added a feature to FMCommander to list these faulty records after compiling a new job file. If there is no pattern, FMCommander must consider these stations as transmitting omni using a full field. FMCommander will place a "?" in place of the antenna designator if a pattern cannot be found. We have notified the FCC of the missing pattern issue, and the staff we talked to didn't remember anything about it; most were not with the Commission back in the eighties.